

# ASIAN FAVOUR

Builders .....Kanasashi,Japan  
 Flag .....Panama  
 Class .....NK  
 P&I .....Northstandard  
 Built .....2008  
 Dwt .....9,046.16MT  
 Gt/Nt .....7727/2819  
 CO<sub>2</sub> system fitted for Holds and ER  
 Multipurpose general cargo vessel  
 Semi boxhold  
 Tween decker



## TANK CAPACITY

Fuel oil:	737.34mt
Mgo:	152.78mt
Fresh water	143.14mt
Ballast water	2114.34mt

## DIMENSIONS

Loa	104.83m
Lbp	96.00m
Breadth	20.00m
Draft fully loaded	9.22m

## GEAR

Cranes	30.7mt *2
Combine	60mt

## HOLD CAPACITY

Volume	
Hold 1 bale/grain	7,533.31/7,944.82m <sup>3</sup>
Hold 2 bale/grain	7,331.46/7,793.46m <sup>3</sup>
Total bale/grain	14,864.77/15,738.28m <sup>3</sup>
Permissible loads	
Tanktop Uniform/local	12mt/m <sup>2</sup> // 20mt/m <sup>2</sup>
Tweendeck	3.8mt/m <sup>2</sup>
Hatchcover	3.8mt/m <sup>2</sup>

## HATCH

Upper(operated by hydraulic motor )  
 NO.1: 26 \* 15m  
 NO.2: 26 \* 15m  
 2nd(pontoon operated by hoist crane)  
 NO.1: 26\* 15m(10pcs)  
 NO.2: 26 \* 15m(10pcs)

## CONSUMPTION/SPEED FOR SAILING

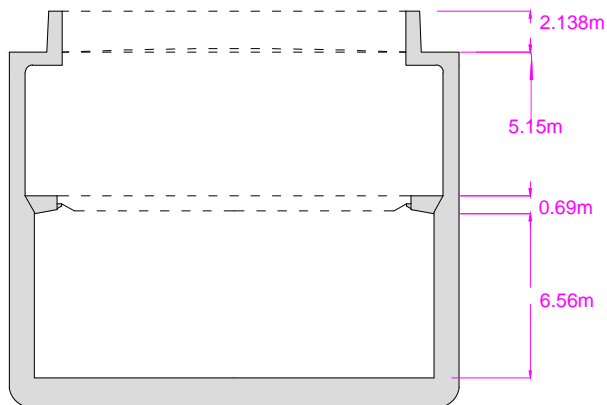
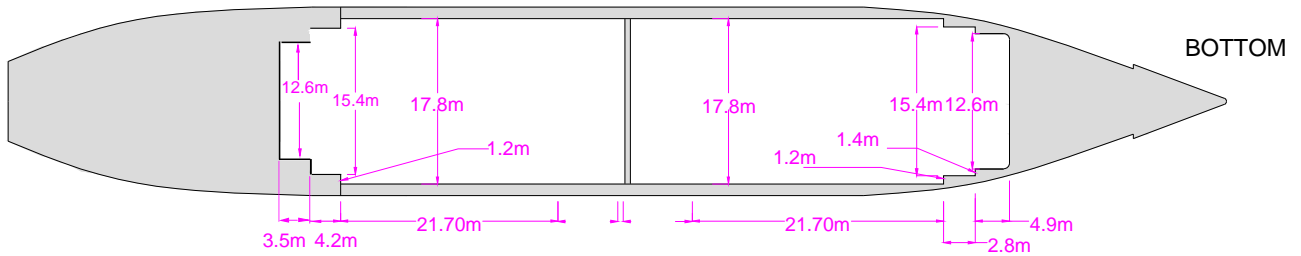
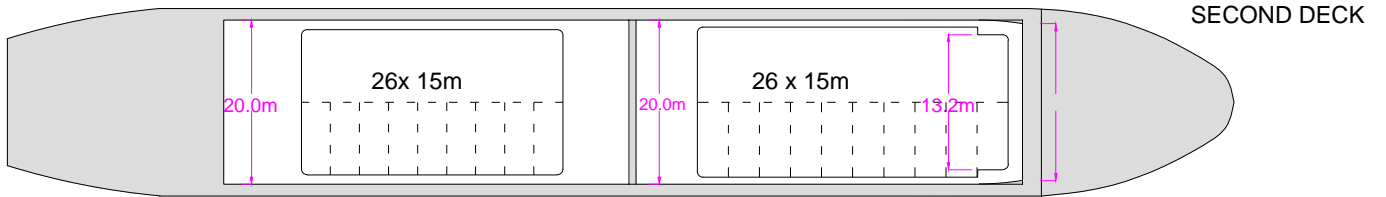
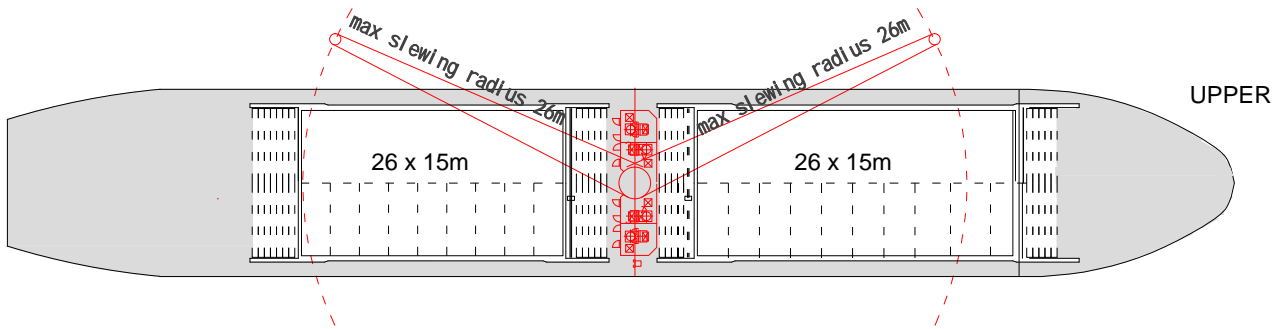
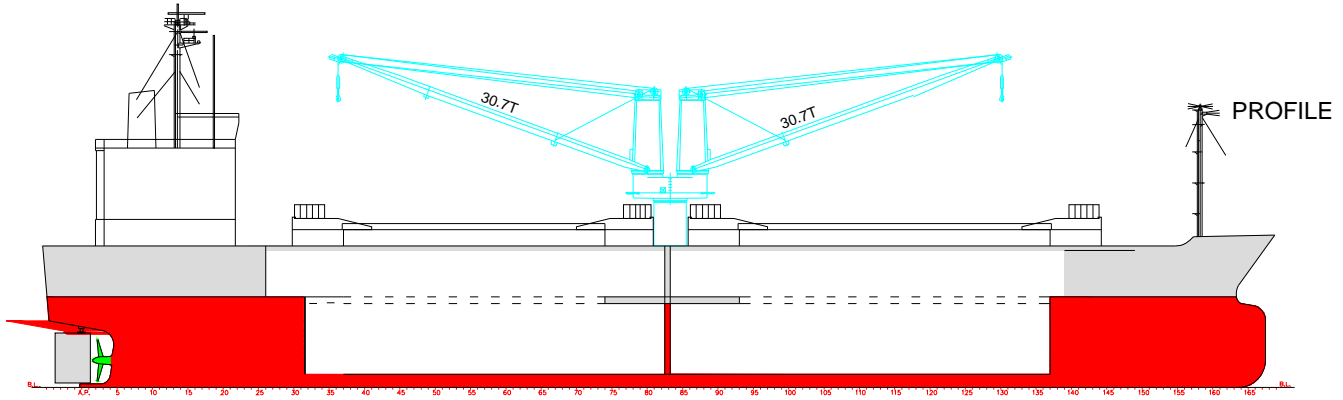
Ballast: 11.00knots on abt 8.8mt/day LSFO380 (Max Sulphur: 0.5%) + abt 0.8mt/day LSMGO(Max Sulphur: 0.1%)

*Under good weather condition upto beaufort scale force 4/douglas state of sea 3,no deck cargo,no adverse current,no swell.Vsl consumes LSMgo for navigating in harbours, canals,rivers and enclosed spaces.*

## CONSUMPTION AT PORT

LSFO380 (Max Sulphur: 0.5%) 0.50mt/day (Boiler) + LSMGO(Max Sulphur: 0.1%) 0.60mt/day (Idle)/ 1.50mt/day(gear working)

# ASIAN FAVOUR



# ASIAN FAVOUR

NO.1 HOLD /FORWARD



NO.1 HOLD /AFT



NO.2 HOLD /FORWARD



NO.2 HOLD /AFT

